

## Digital Printing Guide & Artwork Specifications

### Printable Area

- **Maximum Print Size:**  
we can print on objects up to 610 mm x 420 mm (24" x 16.5").
- **Height Limit:**  
The maximum object height for printing is 150 mm (5.9").

Ensure that your artwork fits within these dimensions and provide exact size specifications for any object or enclosure to be printed.  
Note that the print surface must be flat - **If possible, please supply part drawing**  
This allows us to review any features that may be an issue

### Material Compatibility

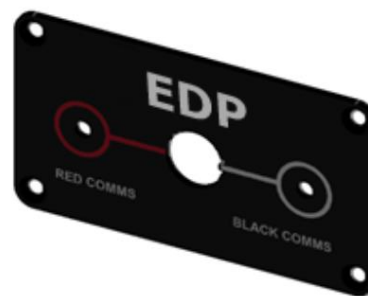
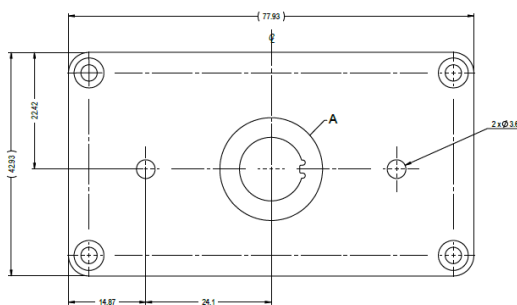
- The printer is compatible with a wide range of substrates, including:
  - Plastics (e.g., ABS, acrylic, polycarbonate)
  - Metal (Raw , Painted, Plated )

Before sending artwork, please confirm the material type and the exact surface finish for optimal printing. Some materials may require pre-treatment for ink adhesion.

### Artwork Composition

- **Scale:**  
Ensure that all images and text are provided at a 1:1 scale.  
The artwork should precisely represent an overlay of the enclosure or panel to be printed.
- **Alignment:**  
Verify that the artwork aligns with all features (such as cut-outs or edges).  
**Misalignment may result in additional processing fees if adjustments are necessary.**
- **Artwork Components:**  
Ideally, only the elements intended for printing should be present in the file.
- **Layered Artwork:**  
If your artwork contains layers, please provide clear instructions on which layers should be printed and which should be excluded.

**Example:** Below is a panel where the white and red printing must align with machined cut-outs and edges, you must ensure that the supplied artwork matches the exact positioning and distances



## Colour Specifications

- **Exact Colour Matching:**  
If precise colour matching is required, please provide colour specifications in CMYK format.
- **Layered Artwork for Colour:**  
When printing colours other than white or black on non-white media, supply layered artwork where possible for accurate colour representation.

*Tip: If this is important supplying comparison samples is strongly recommended to ensure colour accuracy.*

## Image Requirements

Raster Images	Vector Images
Minimum 600 DPI resolution**	Vector formats preferred
Preferred format: .TIFF	Supplied fonts should be included
Other acceptable formats:	Preferred formats: .SVG, .EPS
- .JPG	- Vector PDF
- .PSD	Compatible with Affinity Designer
- .PDF, .CDR	

**Note: Any required modifications to make the artwork usable may incur additional costs on top of the standard artwork processing fee.**

## File Submission & Quality Check

- **File Quality:**  
Ensure your artwork meets the specified format and quality guidelines. Files with insufficient quality may result in additional processing fees.
- **Unsure About Your Artwork?**  
If you're uncertain about the suitability of your artwork, submit your file for analysis, or contact us for guidance.

[Contact Us \(erntec.com.au\)](mailto:info@erntec.com.au)

[www.erntec.com.au](http://www.erntec.com.au)

Fabrication Information  
[Fabrication \(erntec.com.au\)](http://www.erntec.com.au)